



CHRISTINE HINGSTONE
17 HARTUNG ST.
MUNDARING WA 6073

CHRISTINE HINGSTONE is a full time narrative painter exhibiting throughout Australia. Her work has a strong sense of being part of the West Australian community. The colours of the landscape, family life and country culture are themes that run through her whimsical paintings.



JOEL SMOKER
36 HOLLETT ROAD ,STONEVILLE
W.A. 6081.
Tel/Fax (08) 92952879.
redirtarts@bigpond.com
Red Dirt Arts,
PO Box 147, Mundaring W.A 6073

JOEL SMOKER is a ceramicist, photographer, visual artist and singer/songwriter who has exhibited widely throughout Australia. He is represented in the collection of the Art Gallery of Western Australia, The National Gallery of Victoria, The City of Fremantle, The City of Geraldton, The Shire of Mundaring and many private collections. His work can be viewed on his web site at www.joelsmoker.com Joel's Red Dirt Arts Studio is open by appointment all year round.



JEREMY HOLTON
Peach Tree Arts
740 Dibble St, MOUNT HELENA,
(08) 6394 1592
jeremy@jeremyholton.com
<http://www.jeremyholton.com>

JEREMY HOLTON'S paintings are painterly, colourful, vibrant and often whimsical. They include Australian landscapes, flower studies, nudes and his popular imaginary works including the Fat Lady, Dancers and Lover's series. He is well established and his works are in many Australian and international collections. Google "Jeremy Holton" to see the extent of his representation and reputation. Jeremy's studio/gallery is open all year around just ring him first to make a time.



THOMAS BRIAN AYLWARD
Aylward Studios
3995 Werribee Road
Woorlooloo WA 6558
(08) 95731294
aylward@iinet.net.au
www.tbrianaylwardart.com



BRIAN AYLWARD creates paintings, drawings and sculpture using a wide range of media. He has won over eighty awards and commendations and had forty solo exhibitions.



30 & 31 October 10am - 5pm



GRAEME PAGES-OLIVER
24 CONSTANCE STREET,
DARLINGTON 6070
P 9252 0640
www.pajez.com.au
pajez@bigpond.com



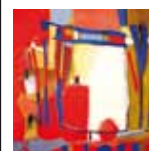
GRAEME PAGES-OLIVER is producing unique state and limited edition, hand painted silk screen prints reflecting his interest in the Western Australia environment, botanical art, pop art, and the comic book genre.



GREG CROWE
Hovea Pottery
55 Bentley Place, Hovea, 6071
(H) 08 92988047
gjcrowe@hotmail.com



I have been potting in Hovea for 30 years. I concentrate on woodfired and saltglazed stoneware pots. I make a wide range of pots that include both large decorative vases and platters as well as pots for everyday use. I have work in the W.A. Art Gallery, Queensland Art Gallery and many other collections. I have taught / demonstrated in Japan, Singapore, U.S. Canada and Europe. In 2008 I recieved a Mid Career Fellowship from ArtsWA and undertook a 3 months residency in the U.S.



INTA GODDARD
1380 Bailey Road
Glen Forrest 6071
(08) 9298 8253
inta@iinet.net.au
<http://members.iinet.net.au/~inta/index.htm>



Latvian-born established abstract artist working in 2D, 3D, and the space between, in various media. Studies in UK, and B.A. Fine Art, Curtin Uni. Has had 10 solo shows, won 18 awards plus Highly Commendeds. Exhibited in UK, Germany, Romania, Latvia (travelling show), Singapore, Hong Kong and throughout Australia.



JUDY KOTAI
Mountolive Studio Gallery
610 Mons Road, Hovea 6071
(08) 92988846
www.mountolivegallery.com
mountolivestudio@bigpond.com



JUDY KOTAI has worked with glass for over thirty years, having numerous public projects and commissions to her credit. She now paints, and designs and makes contemporary jewellery and smaller glass-work which is displayed in her attractive rammed earth gallery set in rambling gardens. Picnic area by a creek. Wheelchair access by prior arrangement. Plentiful off-road parking for cars and minibuses. Gallery open Wed - Sun 10am - 4pm.



MADELEINE CLEAR
200 VERNON AVENUE,
MUNDARING WA 6073



MADELEINE CLEAR is an established artist with wide representation including AGWA, Artbank and New Norcia. Her work is an emotive response to her environment often referencing landscape, natural minutiae, sometimes metaphoric and figurative. Large studio set amongst trees and beside a creek. Wheelchair access. Plenty of parking in a semi-rural environment.

These professional hills artists invite you to visit their art studios on the weekend of 30 & 31 October between 10am and 5pm.

Design by Pajez Art & Design